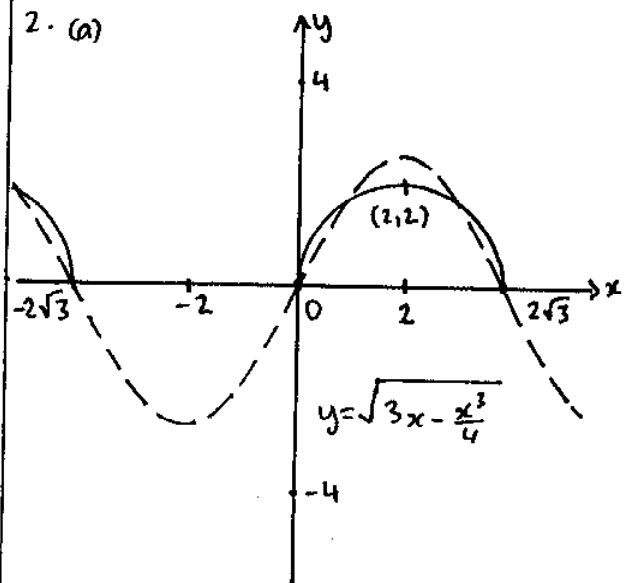
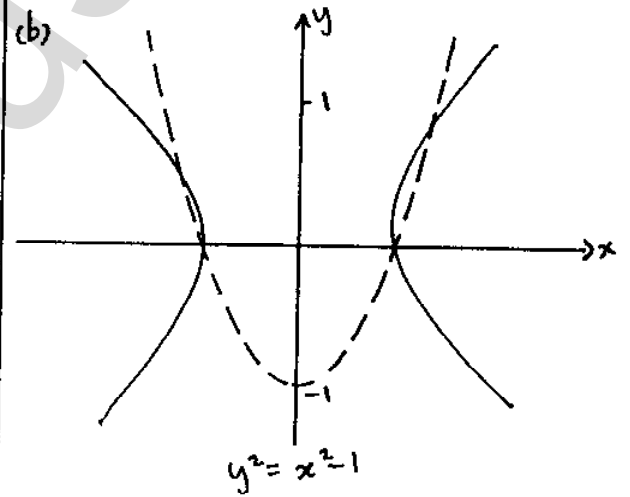
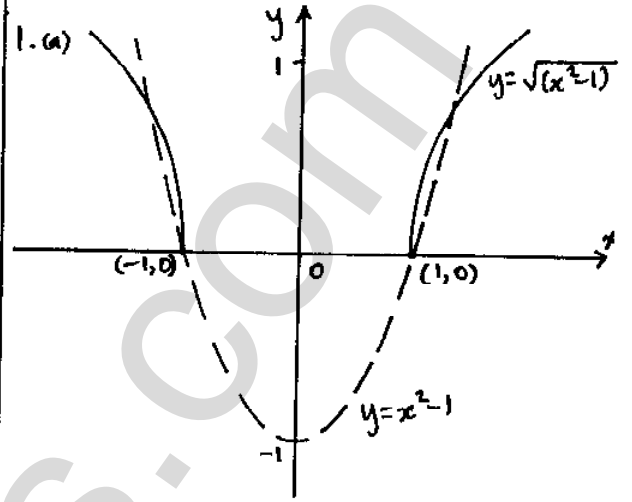
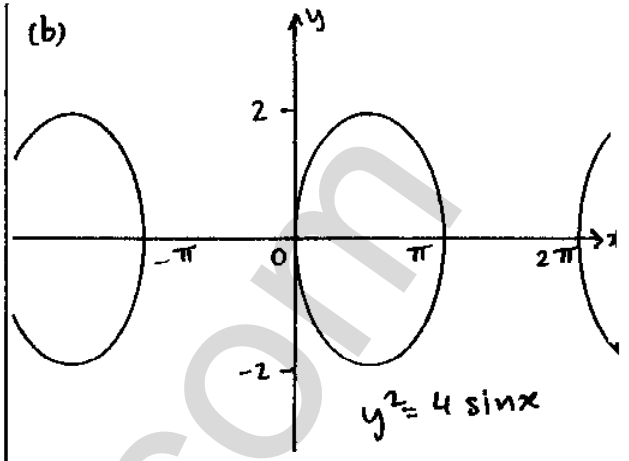
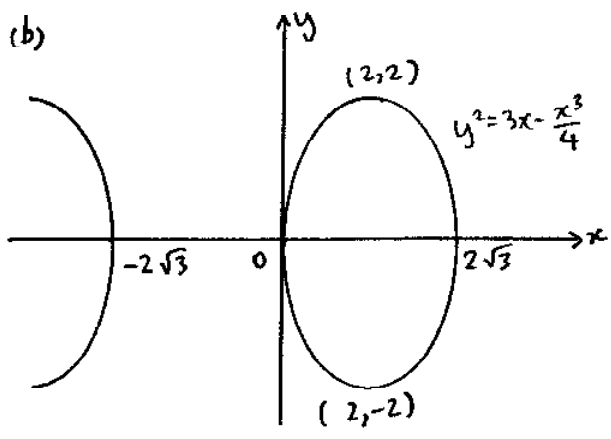
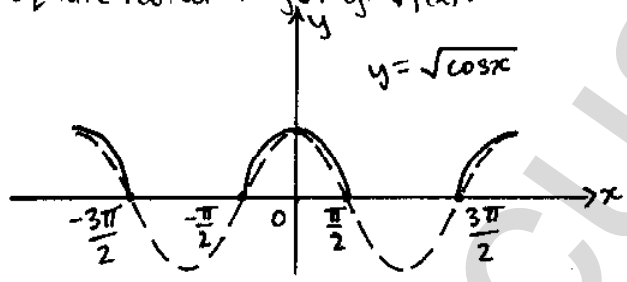


EXERCISE: 1-7





3. (a) When square rooting  $y=f(x)$  every value of  $y$  less than 0 will no longer exist and every positive value of  $y$  will be square rooted to get  $y=\sqrt{f(x)}$ .



(b)  $y^2 = \cos x \therefore y = \pm \sqrt{\cos x}$  where  $y = \sqrt{\cos x}$  is the part of the graph above  $x$ -axis and  $y = -\sqrt{\cos x}$  is the part below  $x$ -axis.

