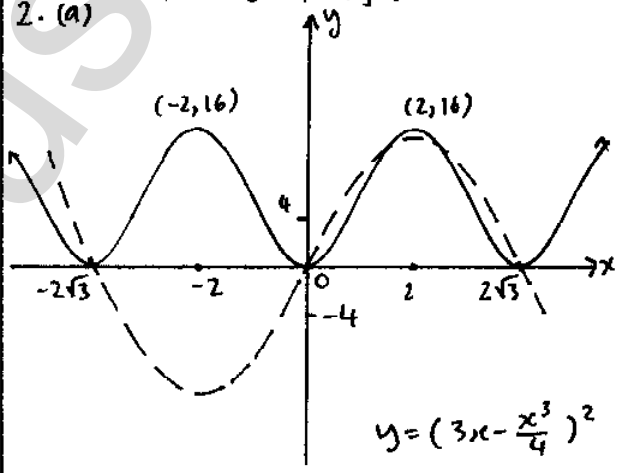
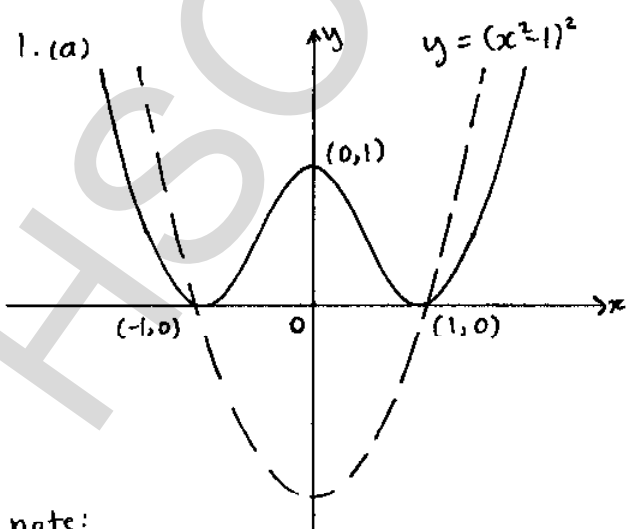


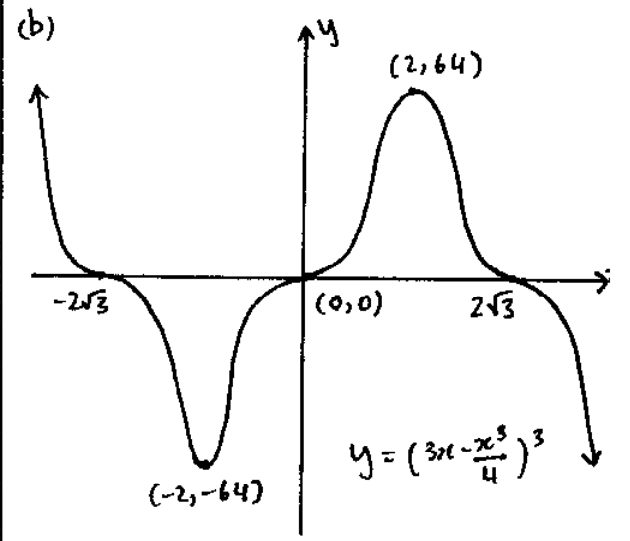
When cubing  $y=f(x)$ , every intersection with y-axis becomes a horizontal point of inflexion for  $y=[f(x)]^3$ .



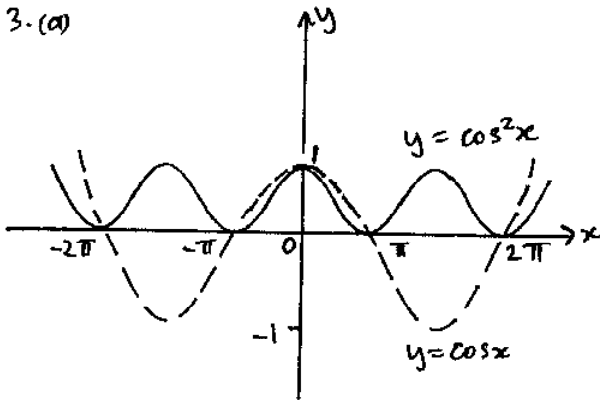
EXERCISE: 1.6



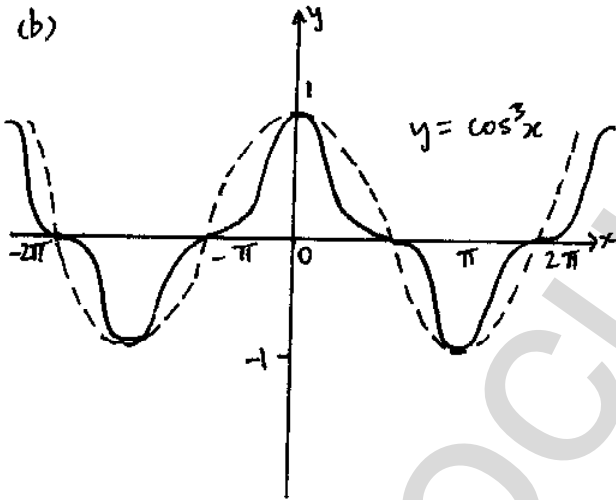
note:  
When squaring a function  $f(x)$ , every intersection with x-axis becomes a minimum turning point for  $y=[f(x)]^2$



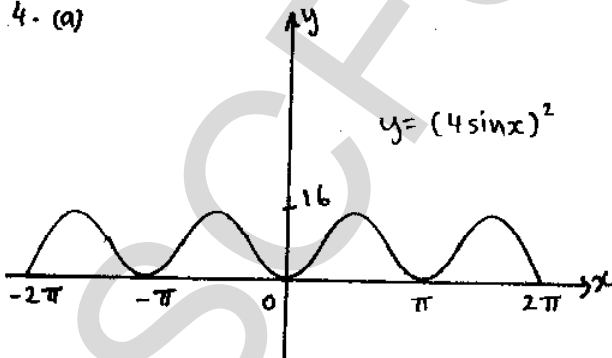
3. (a)



(b)



4. (a)



(b)

